

Disadvantaged Student - Statement

Commentary

Current Cohort of disadvantaged students at Tile Cross Academy – September 2018

Year Group	Total No. of Students	Non Disadvantaged	Disadvantaged	% Disadvantaged
Year 7	103	N/A	N/A	Awaiting PP Data
Year 8	103	34	69	66.99
Year 9	117	69	48	41.02
Year 10	117	63	54	46.15
Year 11	138	59	79	57.24
Total Cohort	582	332	250	42.95

Disadvantaged Statement



At Tile Cross Academy Data is collected at regular intervals throughout the academic year to track the progress of disadvantaged and non-disadvantaged students. Our aim is to ensure all students regardless of backgrounds and starting points to make progress and achieve the highest outcomes possible. We work hard to ensure our disadvantage students achieve as well as non-disadvantaged students and strive to narrow the gaps of all groups of students.

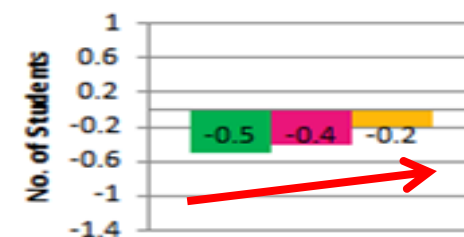
In year progress Data for Disadvantaged and non-disadvantaged students in Year 11 – September 2018

The progress of both disadvantaged and non-disadvantaged students has improved again in 2018. – in 2017 Progress 8 data for both of these groups stood at -0.4 in 2018 this improved in both to -0.2. The performance of both these groups of students remains the same and our gap once again is narrowed. However, there is still work to be done as the achievement for both groups needs to improve to 0.0.

Disadvantaged Student Trends Through Year	Cohort Size		Progress 8		English Element		Maths Element		Ebac Element		Other Element		
	P8	All	P8	All	P8	All	P8	All	P8	All	P8	All	
Oct-17	Disadvantaged	50	69	-1.4	-1.1	-2.1	-1.9	-1.2	-0.9	-0.9	-0.5	-1.5	-1.5
	Non DS	21	58	-1.6	-0.9	-2.3	-1.9	-1.1	-0.4	-0.9	0.2	-2	-1.4
Dec-17	Disadvantaged	49	68	-1.3	-1.1	-1.4	-1.3	-1	-0.7	-1.3	-1.1	-1.4	-1.4
	Non DS	19	59	-1.3	-0.8	-1.6	-1.4	-0.9	-0.1	-1	-0.4	-1.6	-1.4
Feb-18	Disadvantaged	49	71	-1.1	-1	-1.3	-1.3	-1	-0.6	-1.1	-0.8	-1.1	-1.1
	Non DS	18	54	-1.1	-0.6	-1.4	-1.3	-0.9	0	-1	-0.2	-1.2	-1.1
Mar-18	Disadvantaged	47	69	-0.8	-0.7	-1.3	-1.3	0	0.2	-0.8	-0.6	-1.1	-1.1
	Non DS	18	55	-0.8	-0.5	-1.2	-0.3	0	0.5	-0.6	-0.1	-1.1	-1.2
May-18	Disadvantaged	46	68	-0.6	-0.5	-0.9	-0.9	0	0.4	-0.4	-0.3	-0.9	-0.9
	Non DS	18	54	-0.3	-0.3	-0.6	-0.8	0.3	0.7	-0.3	0.1	-0.6	-1
Final	Disadvantaged	47	68	-0.2	-0.1	-0.1	-0.1	-0.3	0.1	0.2	0.6	-0.7	-0.8
	Non DS	18	54	-0.2	0.2	-0.3	-0.2	0	0.5	0.2	1.1	-0.7	-0.7

Two & Three Year Trends

Disadvantaged			Non-Disadvantaged		
2017	2018	Trend	2017	2018	Trend
-0.4	-0.2	↑	-0.4	-0.2	↑



Data over three year trend for disadvantaged students progress 8 performance is positive and heading on an upwards direction. Back in 2018 disadvantaged students achieved a Progress 8 figure of -0.5. This has increased in 2018 to -0.2.

Commentary..... continued

In year progress Data for Disadvantaged and non-disadvantaged students in Year 11 – September 2018

Data	Cohort Size		Progress 8			English Element			Maths element			Ebac Element			Other Element			Attainment 8			Attendance	
	P8	All	Final	Final	Nat	Final	Final	Nat	Final	Final	Nat	Final	Final	Nat	Final	Final	Nat	Final	Final	Nat	All	Nat
			P8	All	(2017)	P8	All	(2017)	P8	All	(2017)	P8	All	(2017)	P8	All	(2017)	P8	All	(2017)		(2017)
All Pupils	65	122	-0.2	0.1	0.00	-0.2	-0.1	0.00	-0.2	0.3	0.00	0.2	0.8	0.00	-0.7	-0.8	0.00	3.5	3.5	4.95	91.6	awaiting
Disadvantaged	47	68	-0.2	-0.1	-0.32	-0.1	-0.1	-0.25	-0.3	0.1	-0.29	0.2	0.6	-0.41	-0.7	-0.8	-0.29	3.7	3.7	4.10	92.6	awaiting
Non Disadvantaged	18	54	-0.2	0.2	0.12	-0.3	-0.2	0.09	0	0.5	0.11	0.2	1.1	0.15	-0.7	-0.7	0.11	3.3	3.3	5.27	90.2	awaiting
Disadvantaged HPA	12		-0.6			-0.3			-0.8			-0.3			-1			5.4			95.3	
Disadvantaged MPA	24		-0.2			-0.3			-0.2			0.2			-0.6			3.8			93.4	
Disadvantaged LPA	9		0.4			0.6			0.4			1			-0.3			2.8			85.2	

Disadvantaged **HPA** students are still behind their counterparts across all performance groups and will be a key target for 2018-19

In the **English element**, disadvantaged students out performed non-disadvantaged students by 0.2. HPA and MPA disadvantaged students are performing slightly lower than their counterparts. DS LPA students are performing better than all groups. The National Averages (2017) for disadvantaged students is above National data

In the **Maths element** disadvantaged students performed slightly lower than their non-disadvantaged counterparts. LPA Disadvantaged students are performing better than all groups and above the national averages (2017) for both disadvantaged and non-disadvantaged students

In the **Ebac element**, disadvantaged students as a whole performed better than all groups and well above the national average (2017). DS HPA students are still behind their counterparts across all groups but at a much narrower gap and will be a key target for 2018-19

In the **Other element**, non-disadvantaged students performed the same as disadvantaged students. Subjects within this bucket will be a focus for improvement in the coming academic year.

The Disadvantaged Students is additional Government funding for publicly funded schools in England to raise the attainment of disadvantaged pupils and close the gap between them and their peers.

Addressing Individual Needs

Educational support staff are equally important in closing the gap for Disadvantaged Students youngsters. Mentoring, Safeguarding and Behaviour specialists are all employed to deal with issues within students' lives, as does support from the outside agencies and attendance officer. The school has created a supportive learning environment to aid students who are falling behind on their studies.

A large portion of the funding goes to supporting students' equality of opportunity. This includes, but is not exclusive to, free resources such as: revision guides, stationery, peripatetic music tuition, trips and after school activities with no charge and transition Summer Schools.

Commentary..... continued

Key Principles

Disadvantaged Students funding was used to support a raft of interventions around the 39% of students with Disadvantaged Students status in Year 11 and the students with this status throughout the other year groups. The key principles of the use of our Disadvantaged Students funding are addressing individual need where there are difficult circumstances and providing strong additional academic support for our Disadvantaged Students with the allocated funding.

Disadvantaged Students is an identified and monitored attribute for students at a whole school and departmental level. All teaching staff are aware of these students within their classes and are asked to be mindful of when and where support needs to be drawn from the funding to provide equality of opportunity.

Increased Monitoring and Support

Students are named and given to staff in terms of lesson planning. Individual targets are given for study support, monitoring and intervention.

A member of the Senior Leadership team takes oversight of these programmes and manages a cohort of students in Year 11 to boost their attainment through one on one meetings, parental engagement and managing additional support.

All middle leaders now present as part of their examination analysis on Disadvantaged Students performance. This is built into half termly meetings with the designated DS lead, based on data collections across all year groups.

A school target to reduce the progress 8 gap between disadvantaged and non-disadvantaged students has been set for 2018-18; in 2018, we achieved a closed gap between the two groups – both groups achieved at -0.2. This year we aim to increase the achievement to 0.



Next Disadvantaged Statement to be produced
September 2019

Disadvantaged Financial Spend

Financial Spend 2017-18		
Disadvantage Funding - Amount allocated for 2017/18:		£319,166.00
Expenditure	Spend	Funded by DS Allocation
Educational Visits		£500.00
Breakfasts		£263.00
Study Equipment		£25.00
Music Services		£4949.00
Professional Services		£3211.00
Student Transport		£10.00
School Uniform		£128.00
Subscriptions		£1500.00
Support Staff Initiatives		
Pastoral Staff	£254,019.00	£147,888.00
Student and Family Welfare		£555.00
SENCO	£91,583.00	£53,319.00
Teaching Assistants	£279,397.00	£162,663.00
Total Disadvantage Funding Spend:		£375,009.00